

GLOBE EU conference

Sustainable Food and Land Use Systems

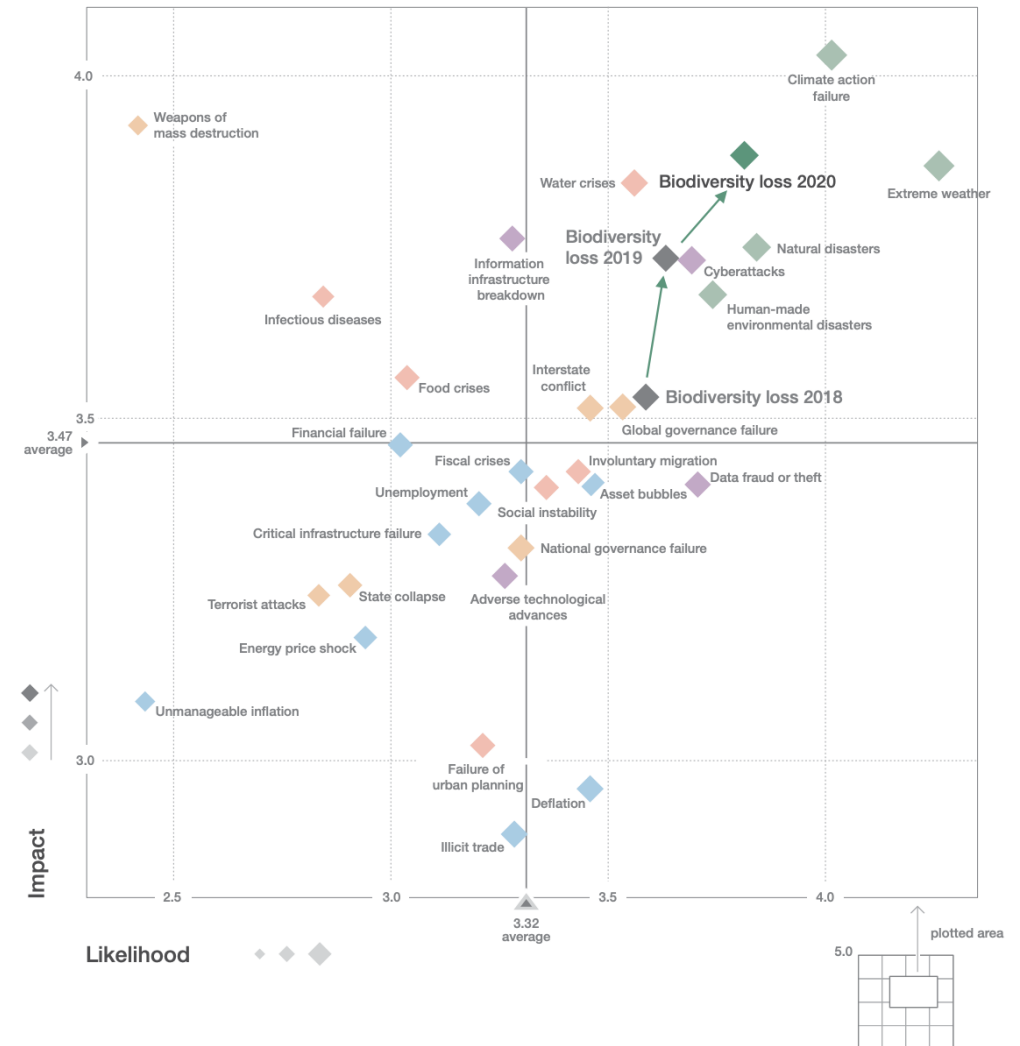
Resource efficiency as a tool to give back to nature

Michael Obersteiner, ECI, Oxford University
September 8, 2020

Nature-based sector is a giant

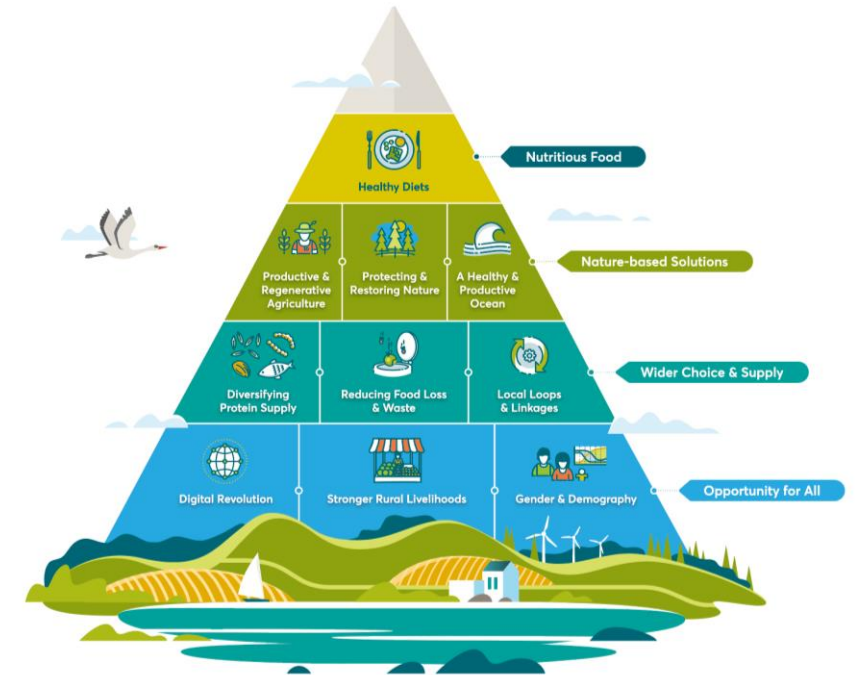
- Largest economic sector
 - 50% nature-based GDP (WEF)
 - Food system GDP in France 36%
- Largest employer (Ag: 1 [2.5] billion)
 - 65% of working poor depend on ag
 - Largest source of childlabor
- AFOLU 23% of total GHGs emissions
 - Food system (21-37%)
 - Negative emissions [11.2 GtCO₂/yr]
- Largest driver of Biodiversity decline
 - Largest source of Risk

The Global Risks Landscape 2020 and the evolution of the biodiversity loss risk in the past three years



Giant in resource inefficiency

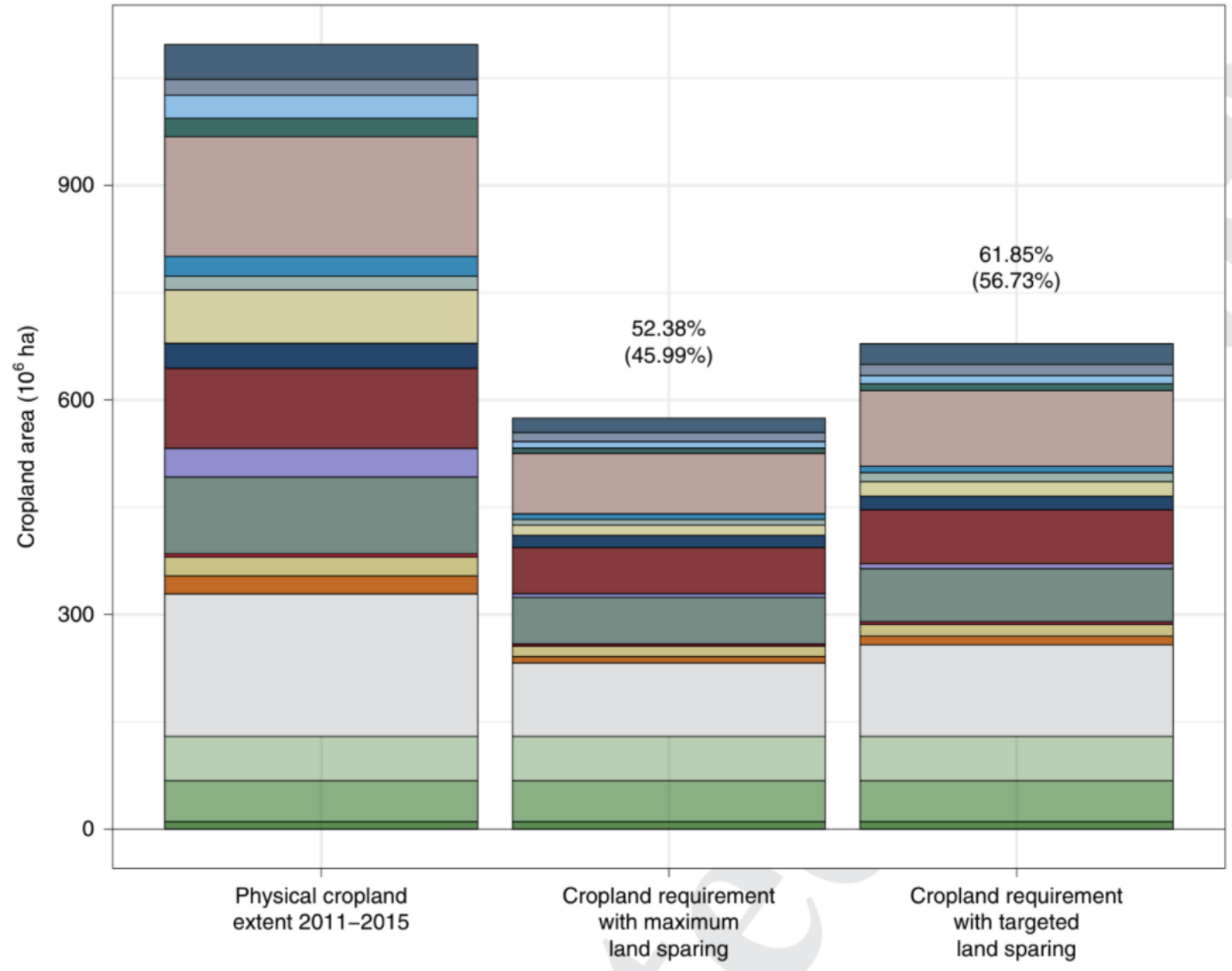
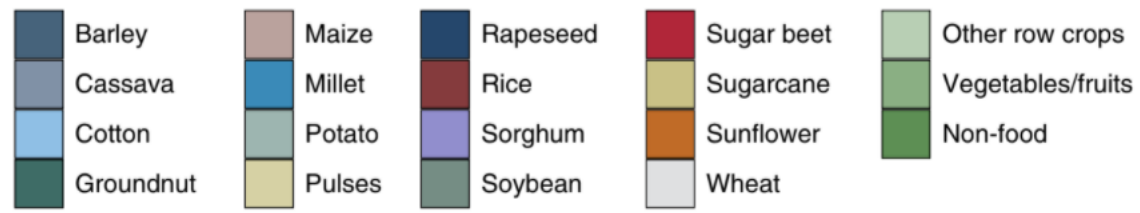
- **Agricultural Production:** Land Sparing versus Land Sharing (Technical Potential)
- **Food loss and waste**
- **Diets**



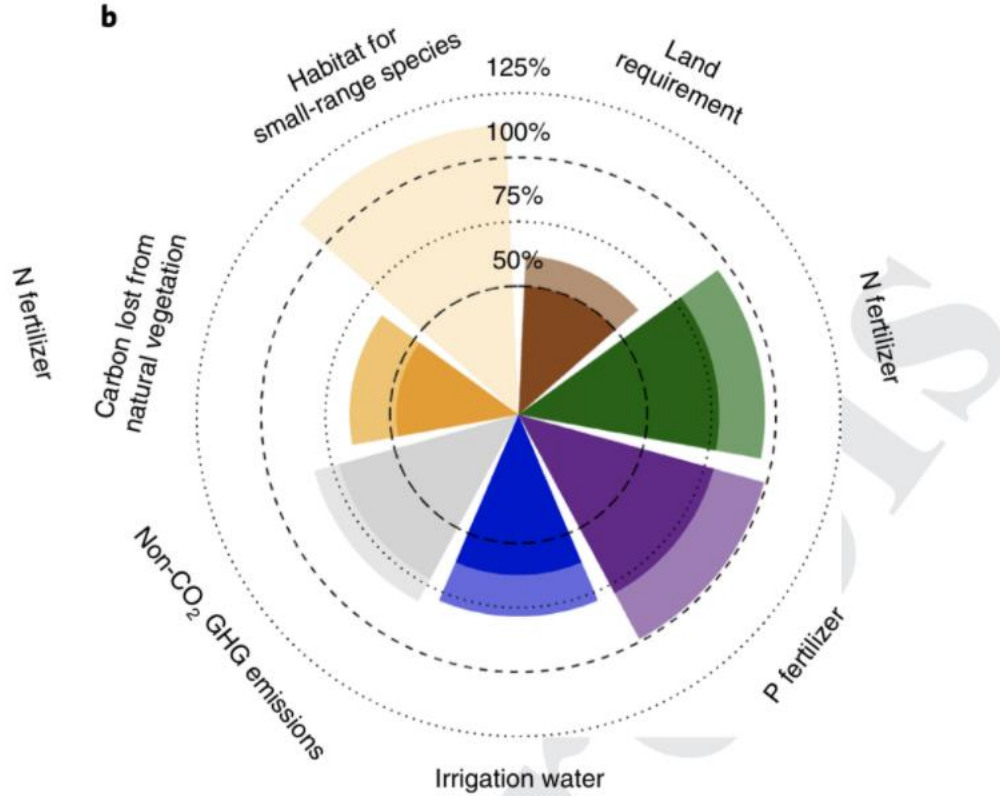
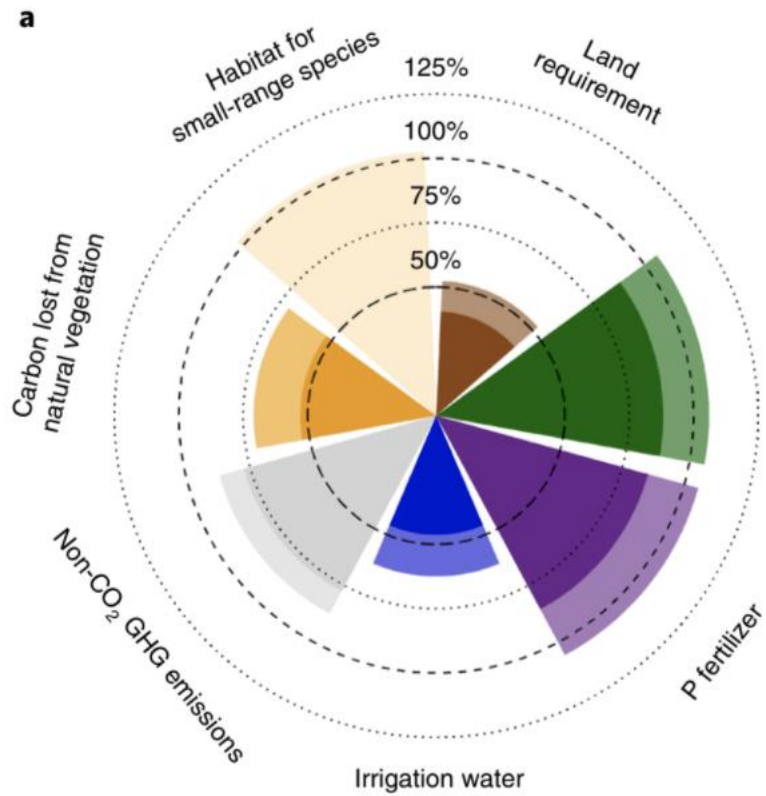
Land Sparing

What if we produced crops with best available technology every where?

- Max Land Sparing: BAT + At best locations
- Targeted Land Sparing: BAT + At best locations & keep at least 30% of today's cropland



Other environmental impacts



Overcoming barriers to the Sustainability Transition

From produce to produce sustainably

- **Even 1/3** less if we were to incentivize billions of consumers for better diets
 - Nudge **1/2 billion farms**
 - > **20% cost saving**
 - Deal with large biophysical and social heterogeneity
 - Overcome lack of data, information, knowledge, capacity, capital etc...
 - Break political inertia
- ⇒ Governance innovation through “**micro-targeting/incentivising**”
- ⇒ Navigating **policy transition risk**