

March 2023

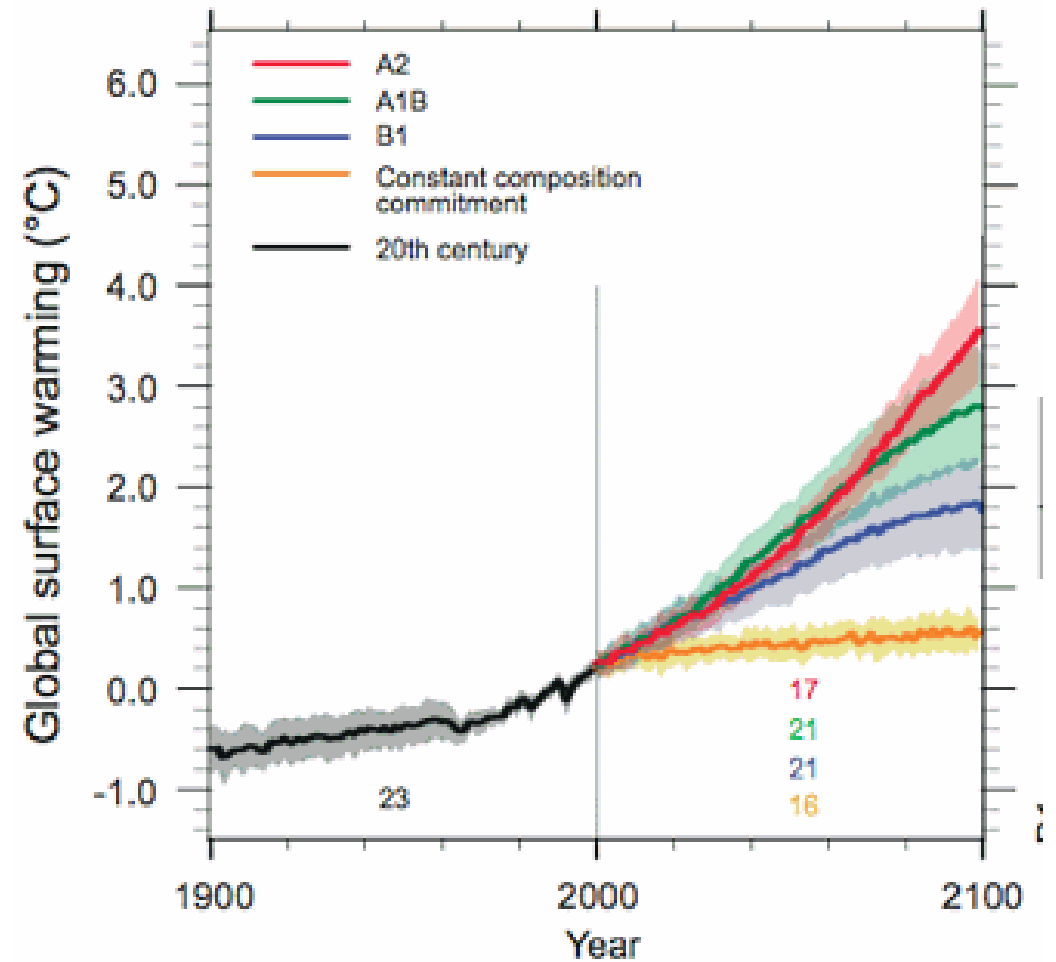
The Technical and Environmental Administration  
Mobility, Climate Action and City Structures

# Climate adaptation in Copenhagen



# Climate change in Copenhagen

- 30% more rain over the next 100 years
- More frequent and heavier cloudburst
- 1 meter higher sealevel in 100 years



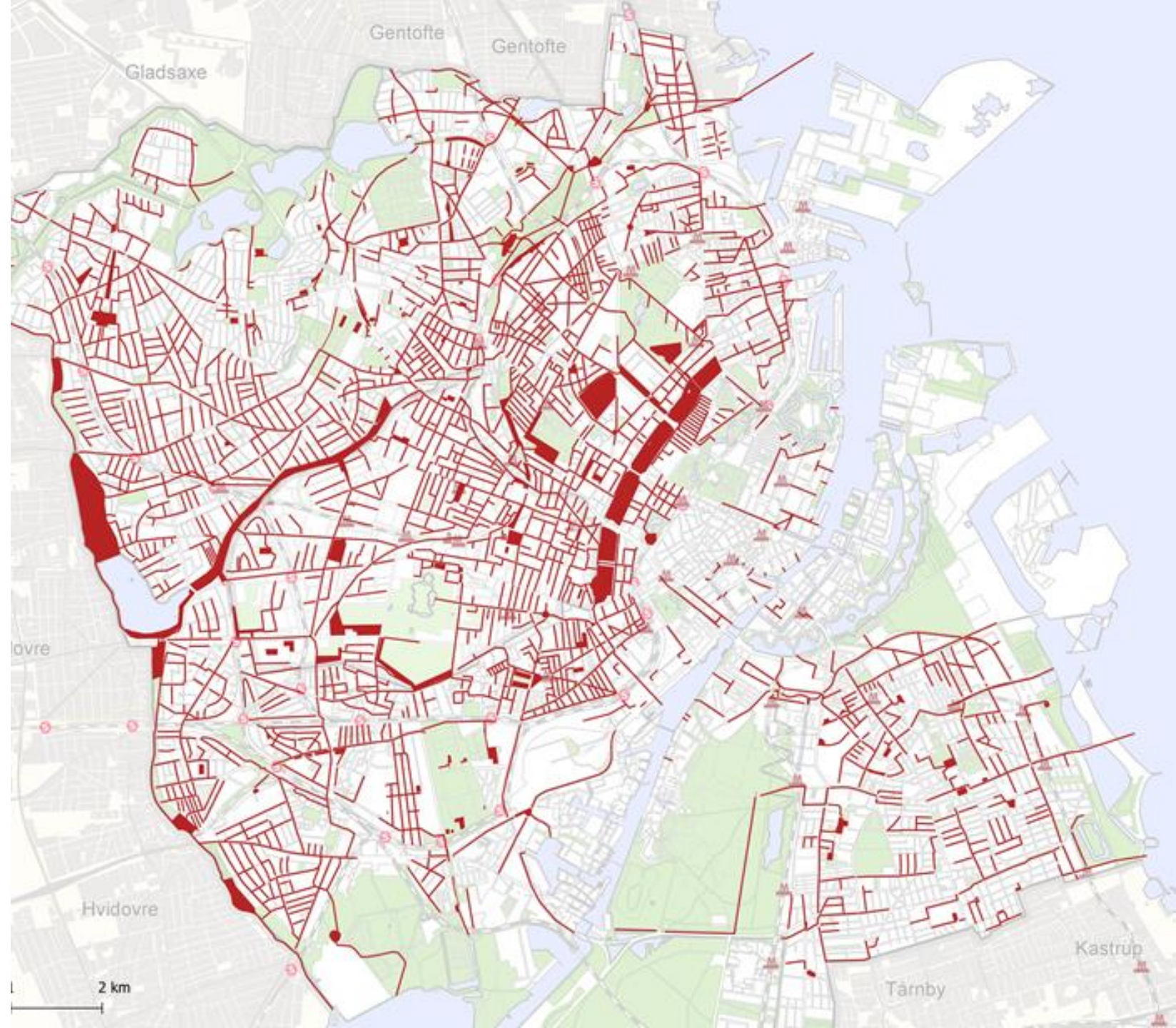






# The cloudburst plan in shorts

- 254 surface projects
- 127 pipes
- 20 years of implementation
- 1,7 BIO. EUR  
Backbone in renewal  
of the city







# **Cloudburst project at Taasinge Plads**

Retention and infiltration of rainwater at the square





# Cloudburst project at Skt. Kjelds Plads

Retention, infiltration and transport of rainwater





# Cloudburst project at Karens Minde

Retention of rainwater in green area





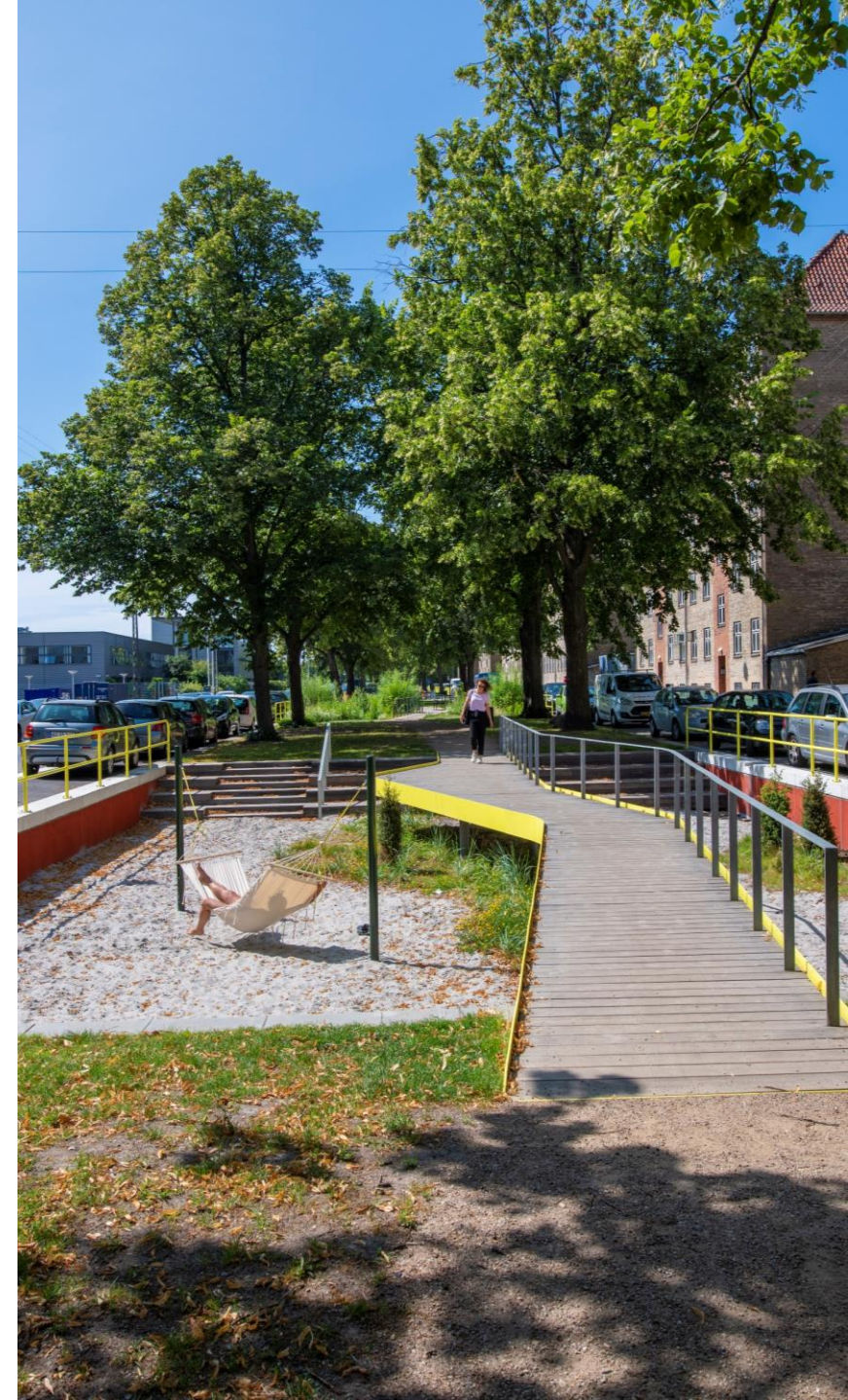
# Cloudburst project at Enghave park

Retention of rainwater in the park



# Cobenifits of adaptation

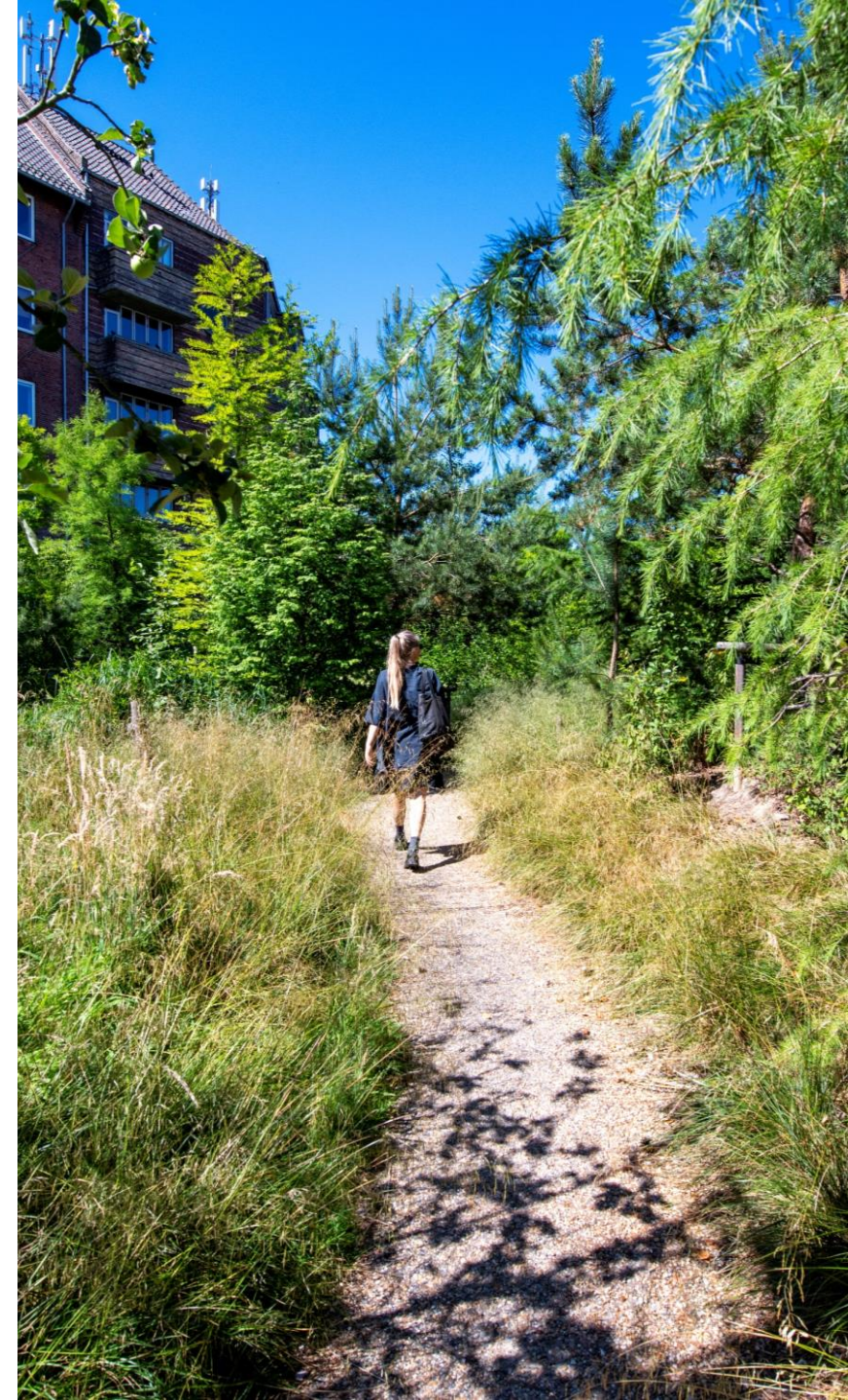
- Recreational value
- Biodiversity
- Meeting places
- Improved microclimate (UHI)
- Synergy with urban renewal
- Architecture
- Attractive city
- Rainwater recycling





# Lessons learned and needs

- Multidisciplinary collaboration is essential
- Holistic approach to climate adaptation
- Socio economic evaluation, including carbon emission, biodiversity, health etc.
- Challenges existing practices
- Need for innovative solutions
- Need to share experiences
- Need to adapt legislation





A photograph of a city street scene. In the foreground, a man in a black jacket and dark pants is riding a black bicycle from right to left. To his left, a group of pedestrians is walking on a paved sidewalk. Further back, a man in a red jacket and khaki pants is walking towards the camera. The background features a large, light-colored building with a triangular roof, a statue of a man in a green coat, and a bust of a man on a pedestal. The scene is framed by trees on both sides, and a yellow bus is visible in the distance. The text "Thank you for your attention" is overlaid in the center of the image.

**Thank you for your attention**