

**Smarter technology for all**

**Rasmus Borch | Education EMEA**

**Lenovo**

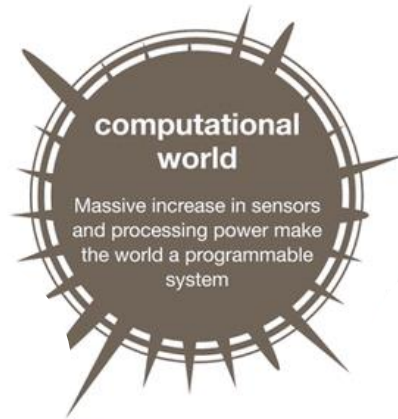
# Future Work Skills 2020

While all six drivers are important in shaping the landscape in which each skill emerges, the color-coding and placement here indicate which drivers have particular relevance to the development of each of the skills.

2011 view



**extreme longevity**  
Increasing global lifespans change the nature of careers and learning



**computational world**  
Massive increase in sensors and processing power make the world a programmable system



**superstructured organizations**  
Social technologies drive new forms of production and value creation



**rise of smart machines and systems**  
Workplace robotics nudge human workers out of rote, repetitive tasks



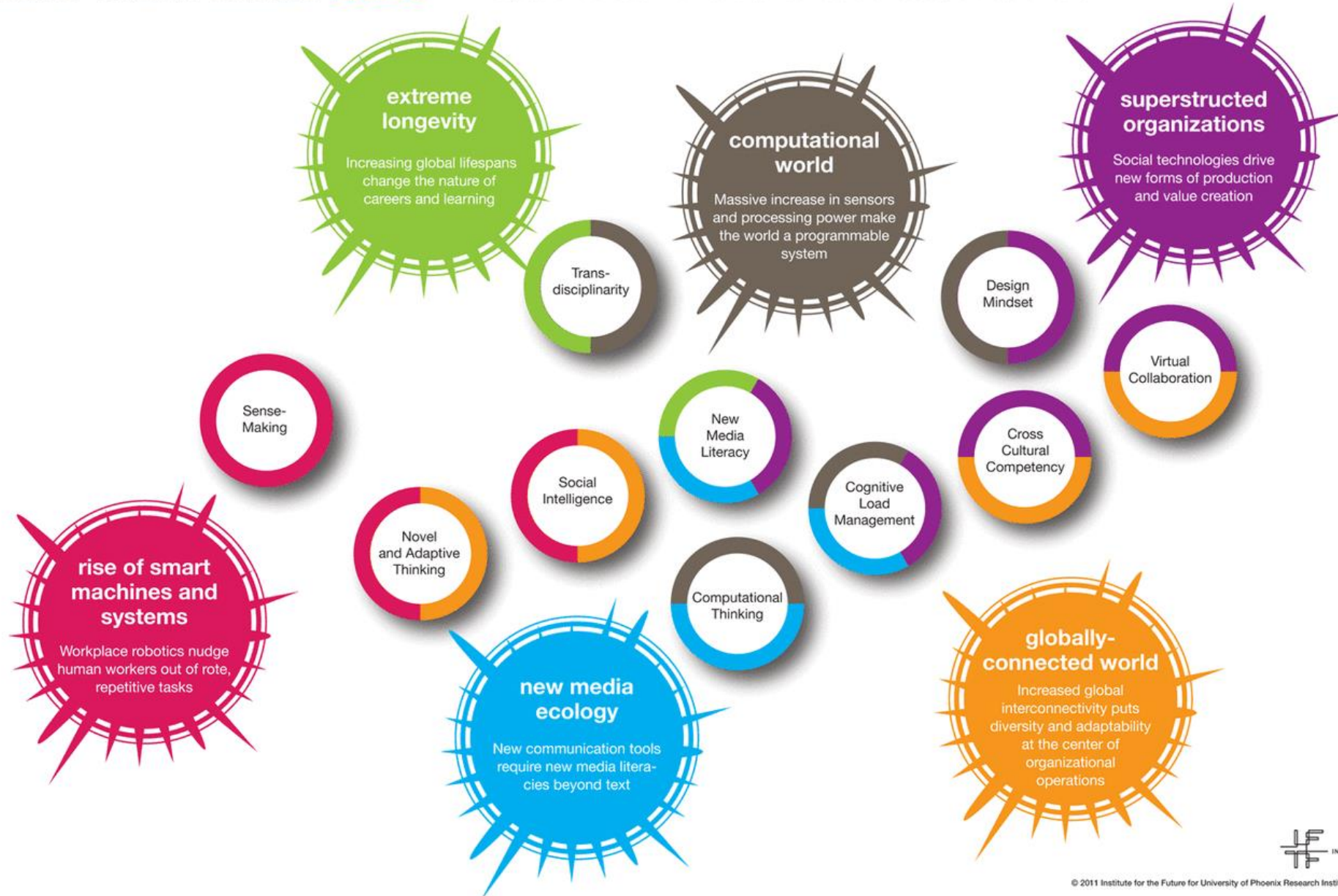
**new media ecology**  
New communication tools require new media literacies beyond text



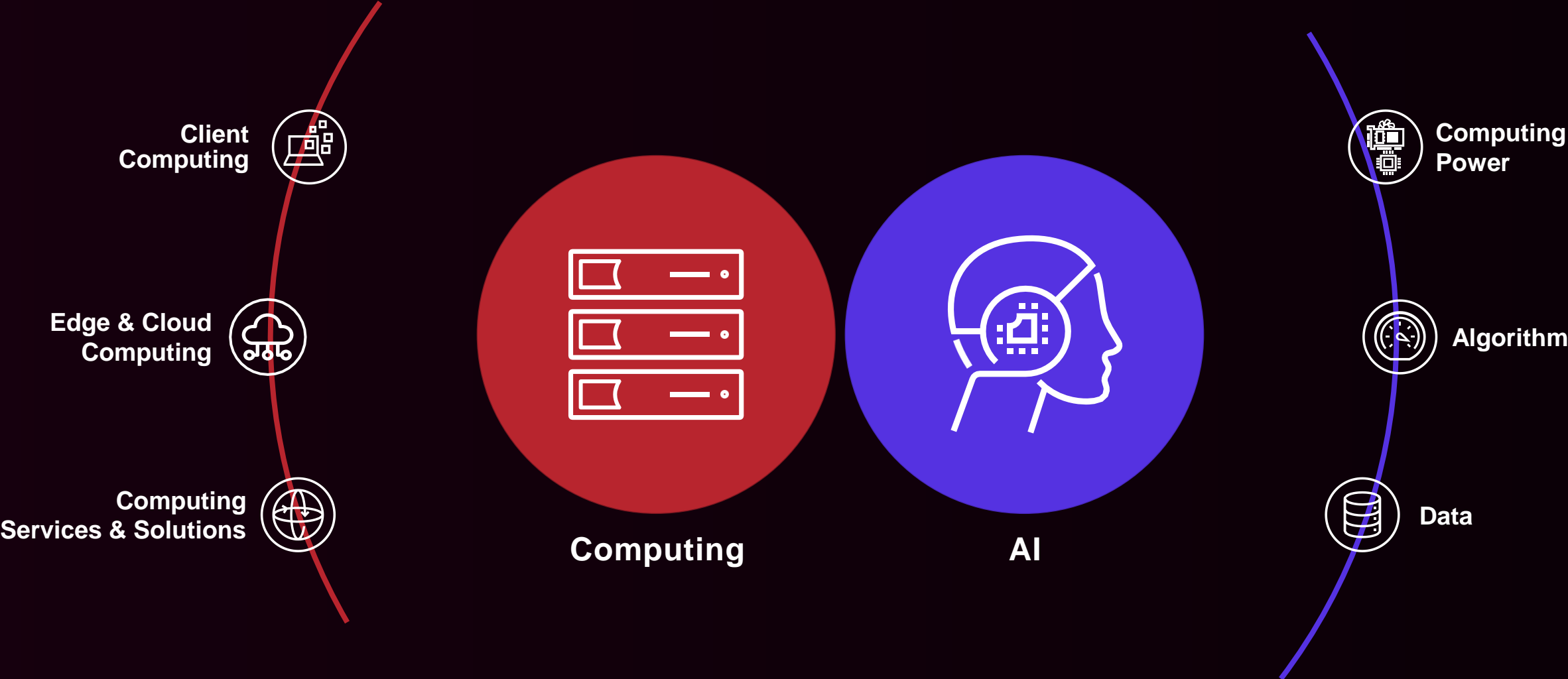
**globally-connected world**  
Increased global interconnectivity puts diversity and adaptability at the center of organizational operations

# Future Work Skills 2020

While all six drivers are important in shaping the landscape in which each skill emerges, the color-coding and placement here indicate which drivers have particular relevance to the development of each of the skills.

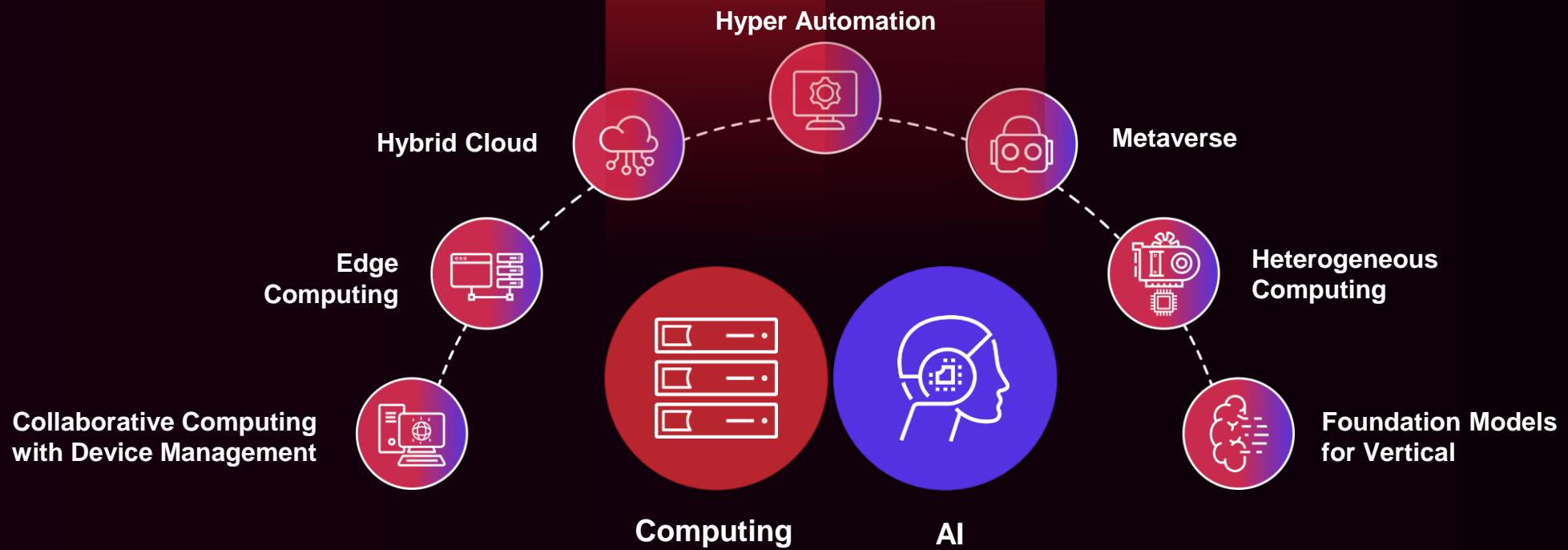


# Anchor Technology of A.I. and Computing



# Business Empowerment

# Future Technology



## Three Types of FMs: Public, Private, and Personal



**Public FM**  
accessible to all people

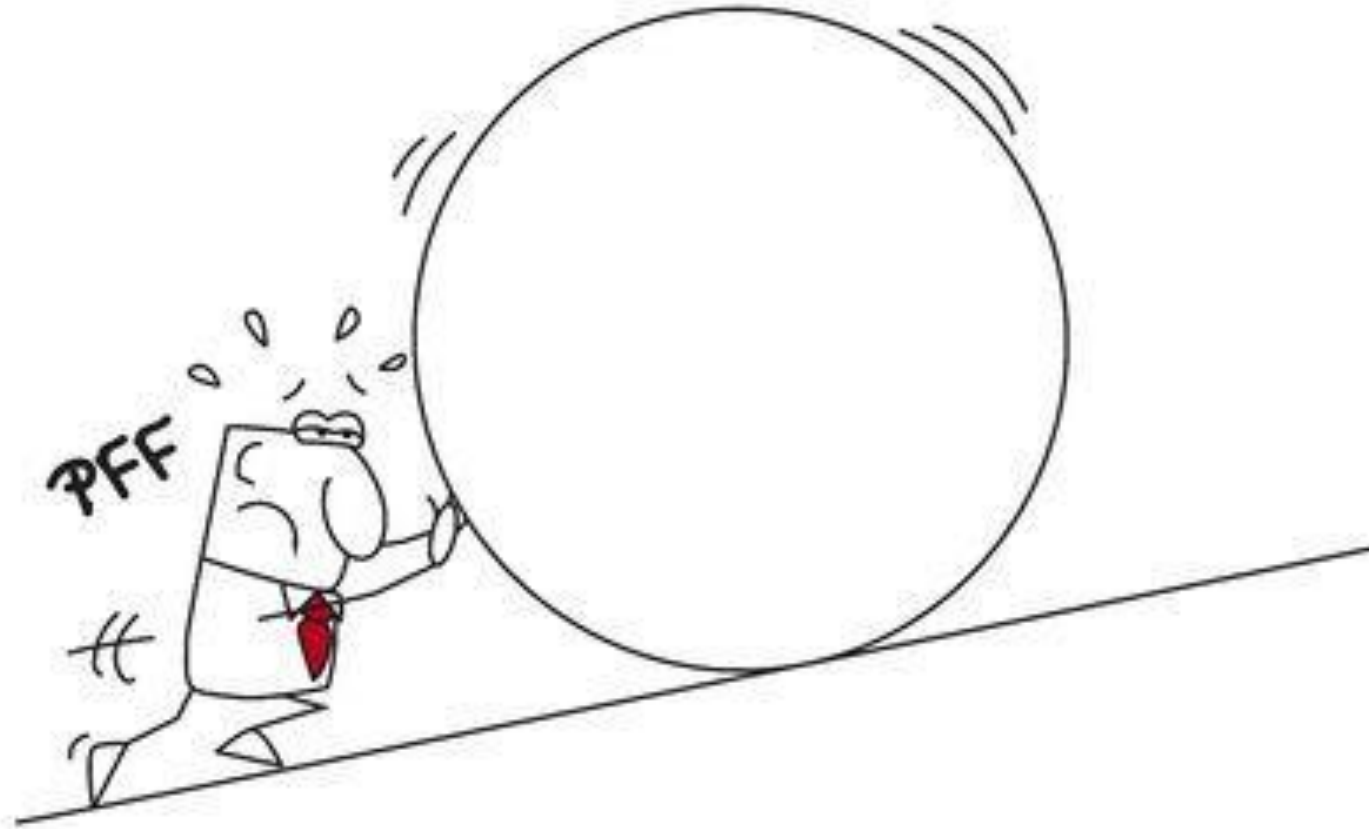


**Private FM**  
accessible to a group of people



**Personal FM**  
accessible to a single person

# IT'S NEVER GONNA STOP





## TECHNOLOGICAL LITTERACY

”The learnt ability to gain and combine **technical know-how** together with other forms of **social and cultural understanding** to identify and qualify opportunities for the deployment, use and application of new and disruptive technologies within a professional context”

**Technucation**



# Future Work Skills 2020

While all six drivers are important in shaping the landscape in which each skill emerges, the color-coding and placement here indicate which drivers have particular relevance to the development of each of the skills.



**extreme longevity**  
Increasing global lifespans change the nature of careers and learning

**computational world**  
Massive increase in sensors and processing power make the world a programmable system

**superstructured organizations**  
Social technologies drive new forms of production and value creation

**rise of smart machines and systems**  
Workplace robotics nudge human workers out of rote, repetitive tasks

**new media ecology**  
New communication tools require new media literacies beyond text

**globally-connected world**  
Increased global interconnectivity puts diversity and adaptability at the center of organizational operations

Sense-Making

Trans-disciplinarity

Design Mindset

Virtual Collaboration

New Media Literacy

Cross Cultural Competency

Novel and Adaptive Thinking

Social Intelligence

Cognitive Load Management

Computational Thinking

## REGENERATIVE MINDSET



Regenerative sustainability means to **integrate** “**inner**” (mindsets, world views, paradigms and behaviour) and “**outer**” dimensions of the sustainability necessary for transformation.

Halogen

**More than  
1 million  
boxes  
every year**



**Smarter  
technology  
for all**

**Lenovo**

Smarter  
technology  
for all

Lenovo

thanks.